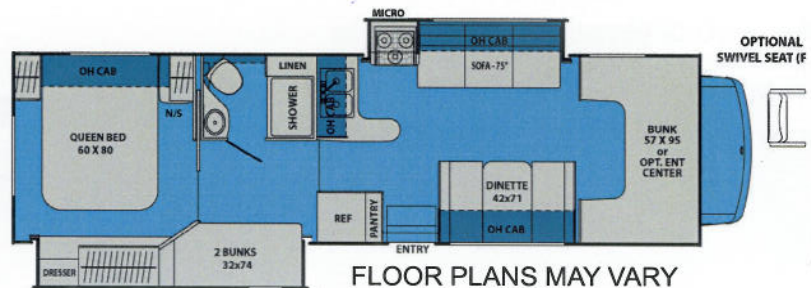


## VEHICLE FLEET 2015 - 2019

MOTOR HOME TRAVEL CANADA INC.

### **MHA30: 30 Ft. Class A Motorhome (Type Q)**

- All 2015 - 2019 - Sample floor plan.
- Guaranteed Rear Queen Floorplan.
- For 4 adults 2 children.
- Length: 915 cm, Width: 251 cm, Exterior Height: 366 cm, Interior Height, 211 cm



### **Features and Specifications:**

- Automatic transmission.
- Power brakes and Power Steering.
- AM/FM radio with CD player.
- Dash air, cruise control.
- Upgraded interior with high back seats.
- Drop down bed (front) - 190 cm x 147 cm
- Queen bed - 217 cm x 166 cm
- Dinette/Bed combo - 188 cm x 112 cm
- Sofa/Bed combo - 173 cm x 107 cm
- Kitchen with 3 burner stove.
- Microwave.
- Fresh water plumbing with electric water pump.
- 210 L fresh water tank.
- Separate 105 - 150 L grey and black waste tanks.
- 85 L Propane (LPG) tank.
- 300 L gas tank (Unleaded gasoline only).
- 4 cubic ft. 3 way refrigerator with freezer.
- LPG furnace.
- Marine Toilet.
- 25 L LPG water heater.
- Stand-up shower.
- Roof Air conditioning.
- 4.0 KW Power Generator
- TV.