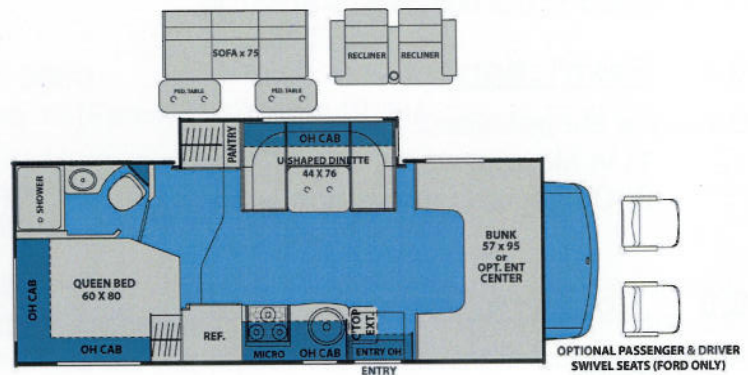


VEHICLE FLEET 2015 - 2019

MOTOR HOME TRAVEL CANADA INC.

MHC24: 24 Ft. Class C Motorhome (Type F)

- All 2015 - 2019 - Sample floor plan.
- For 4 adults 2 children.
- Length: 730 cm, Width: 251 cm, Exterior Height: 366 cm, Interior Height, 211 cm



FLOOR PLANS MAY VARY

Features and Specifications:

- Automatic transmission.
- Power brakes and Power Steering.
- AM/FM radio.
- Dash air, cruise control.
- Upgraded interior with high back seats.
- Cab over bed - 190 cm x 147 cm
- Double bed - 188 cm x 132 cm
- Dinette/Bed combo - 188 cm x 112 cm
- Kitchen with 3 burner stove.
- Microwave oven (in most vehicles).
- Fresh water plumbing with electric water pump.
- 150 - 200 L fresh water tank.
- Separate 80 - 120 L grey and black waste tanks.
- 42 LBS Propane (LPG) tank.
- 200 L gas tank (Unleaded gasoline only).
- 4 cubic ft. 3 way refrigerator with freezer.
- LPG furnace.
- Marine Toilet.
- 25 L LPG water heater.
- Stand-up shower.
- Roof Air conditioning.
- Generator (in most vehicles).